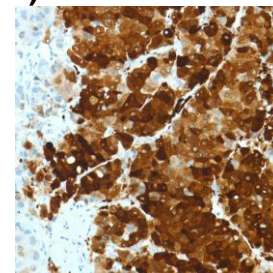




Rabbit Anti-Human Arginase-1 Monoclonal Antibody (Clone SP156)

CATALOG #:

- M4560** 0.1 ml rabbit monoclonal antibody purified by protein A/G in PBS/1% BSA buffer pH 7.6 with less than 0.1% sodium azide.
- M4562** 0.5 ml rabbit monoclonal antibody purified by protein A/G in PBS/1% BSA buffer pH 7.6 with less than 0.1% sodium azide.
- M4564** 1.0 ml rabbit monoclonal antibody purified by protein A/G in PBS/1% BSA buffer pH 7.6 with less than 0.1% sodium azide.
- M4561** 7.0 ml pre-diluted rabbit monoclonal antibody purified by protein A/G in TBS/1% BSA buffer pH 7.6 with less than 0.1% sodium azide.



Human hepatocellular carcinoma stained with anti-arginase-1 antibody

INTENDED USE:

For Research Use Only. Not for use in diagnostic procedures.

CLONE:

SP156

IMMUNOGEN:

Synthetic peptide derived from the C-terminus of human arginase-1 protein.

IG ISOTYPE:

Rabbit IgG

EPITOPE:

Not determined

MOLECULAR WEIGHT:

35 kDa

SPECIES REACTIVITY:

Human (tested). (See www.springbio.com for information on species reactivity predicted by sequence homology).

DESCRIPTION:

Arginase-1 (ARG1) catalyzes the hydrolysis of L-arginine into ornithine and urea, a critical step for the urea cycle. Defects in ARG1 are the cause of argininemia, an autosomal recessive disorder characterized by hyperammonemia. There are several isoforms of mammalian arginase. The type I isoform, is a cytosolic enzyme and expressed predominantly in the liver as a component of the urea cycle. Hepatocellular carcinoma usually shows higher protein expression of ARG1 than normal liver cells.

APPLICATIONS:

Immunohistochemistry (IHC)

IHC PROCEDURE:

Specimen Preparation: Formalin-fixed, paraffin-embedded tissues are suitable for use with this primary antibody.

Deparaffinization: Deparaffinize slides using xylene or xylene alternative and graded alcohols.

Antibody Dilution: If using the concentrate format of this product, dilute the antibody 1:100. The dilutions are estimates; actual results may differ because of variability in methods and protocols.

Antigen Retrieval: Boil tissue section in 1mM EDTA buffer, pH 8.0 for 10 min followed by cooling at room temperature for 20 min.

Primary Antibody Incubation: Incubate for 10 minutes at room temperature.

Slide Washing: Slides must be washed in between steps. Rinse slides with PBS/0.05% Tween.

Visualization: Detect the antibody as instructed by the instructions provided with the visualization system.

IHC POSITIVE CONTROL:

Liver, hepatocellular carcinoma

CELLULAR LOCALIZATION:

Cytoplasm

STORAGE & STABILITY:

Store at 2-8°C. Do not freeze. The user must validate any other storage conditions. When properly stored, the reagent is stable to the date indicated on the label. Do not use the reagent beyond the expiration date.

There are no definitive signs to indicate instability of this product; therefore, positive and negative controls should be tested simultaneously with unknown specimens.

If unexpected results are observed which cannot be explained by variations in laboratory procedures and a problem with the reagent is suspected, contact Technical Support at spring.tech@ventana.roche.com.

WARNINGS & PRECAUTIONS:

1. Avoid contact of reagents with eyes and mucous membranes. If reagents come into contact with sensitive areas, wash with copious amounts of water.
2. This product is harmful if swallowed.
3. Consult local or state authorities with regard to recommended method of disposal.
4. Avoid microbial contamination of reagents.