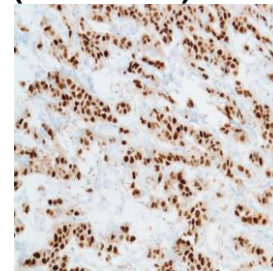




## Rabbit Anti-Human Progesterone Receptor Monoclonal Antibody (Clone SP2)

**CATALOG #:**

- M3020** 0.1 ml rabbit monoclonal antibody supplied as tissue culture supernatant in TBS/1% BSA buffer pH 7.5 with less than 0.1% sodium azide.
- M3022** 0.5 ml rabbit monoclonal antibody supplied as tissue culture supernatant in TBS/1% BSA buffer pH 7.5 with less than 0.1% sodium azide.
- M3024** 1.0 ml rabbit monoclonal antibody supplied as tissue culture supernatant in TBS/1% BSA buffer pH 7.5 with less than 0.1% sodium azide.
- M3021** 7.0 ml pre-diluted rabbit monoclonal antibody supplied as tissue culture supernatant in TBS/1% BSA buffer pH 7.6 with less than 0.1% sodium azide.



*Human breast ductal carcinoma stained with anti-PR antibody*

**INTENDED USE:**

For Research Use Only. Not for use in diagnostic procedures.

**CLONE:**

SP2

**IMMUNOGEN:**

Recombinant protein encoding human progesterone receptor aa 412-558.

**IG ISOTYPE:**

Rabbit IgG

**EPITOPE:**

Not determined

**MOLECULAR WEIGHT**

116 kDa

**SPECIES REACTIVITY:**

Human (tested). (See [www.springbio.com](http://www.springbio.com) for information on species reactivity predicted by sequence homology.)

**DESCRIPTION:**

The progesterone receptor (PgR) is an estrogen-regulated protein. It has been proposed that expression of PgR determination indicates a responsive estrogen receptor (ER) pathway. A number of studies have shown that PgR determination provides supplementary information to ER.

**APPLICATIONS:**

Immunohistochemistry (IHC)

**IHC PROCEDURE:**

**Specimen Preparation:** Formalin-fixed, paraffin-embedded tissues are suitable for use with this primary antibody.

**Deparaffinization:** Deparaffinize slides using xylene or xylene alternative and graded alcohols.

**Antibody Dilution:** If using the concentrate format of this product, dilute the antibody 1:400. The dilutions are estimates; actual results may differ because of variability in methods and protocols.

**Antigen Retrieval:** Boil tissue section in 10mM citrate buffer, pH 6.0 for 10 min followed by cooling at room temperature for 20 min.

**Primary Antibody Incubation:** Incubate for 30 minutes at room temperature.

**Slide Washing:** Slides must be washed in between steps. Rinse slides with PBS/0.05% Tween.

**Visualization:** Detect the antibody as instructed by the instructions provided with the visualization system.

**POSITIVE CONTROL:**

Breast Ductal Carcinoma

**CELLULAR LOCALIZATION:**

Nucleus

**STORAGE & STABILITY**

Store at 2-8°C. Do not freeze. The user must validate any other storage conditions. When properly stored, the reagent is stable to the date indicated on the label. Do not use the reagent beyond the expiration date.

There are no definitive signs to indicate instability of this product; therefore, positive and negative controls should be tested simultaneously with unknown specimens.

If unexpected results are observed which cannot be explained by variations in laboratory procedures and a problem with the reagent is suspected, contact Technical Support at [spring.tech@ventana.roche.com](mailto:spring.tech@ventana.roche.com).

**WARNINGS & PRECAUTIONS:**

1. Avoid contact of reagents with eyes and mucous membranes. If reagents come into contact with sensitive areas, wash with copious amounts of water.
2. This product is harmful if swallowed.
3. Consult local or state authorities with regard to recommended method of disposal.
4. Avoid microbial contamination of reagents.